

North = 8° 45' 13.5"
 East = 76° 43' 20.8"

LEGEND

	Building		Floor Level
	Shed		Tree
	Boundary		Coconut Tree
	Cutting		Bamboo
	Temporary Bench Mark		Contours
	Electric Post		Spot Levels

BHARATH PUBLIC SCHOOL - KANNAMBA - VARKALA

AREA :- 82.15 ares (2 acres 3 cents)

District - Thiruvananthapuram

Taluk - Chirayinkeezhu

Village - Varkala

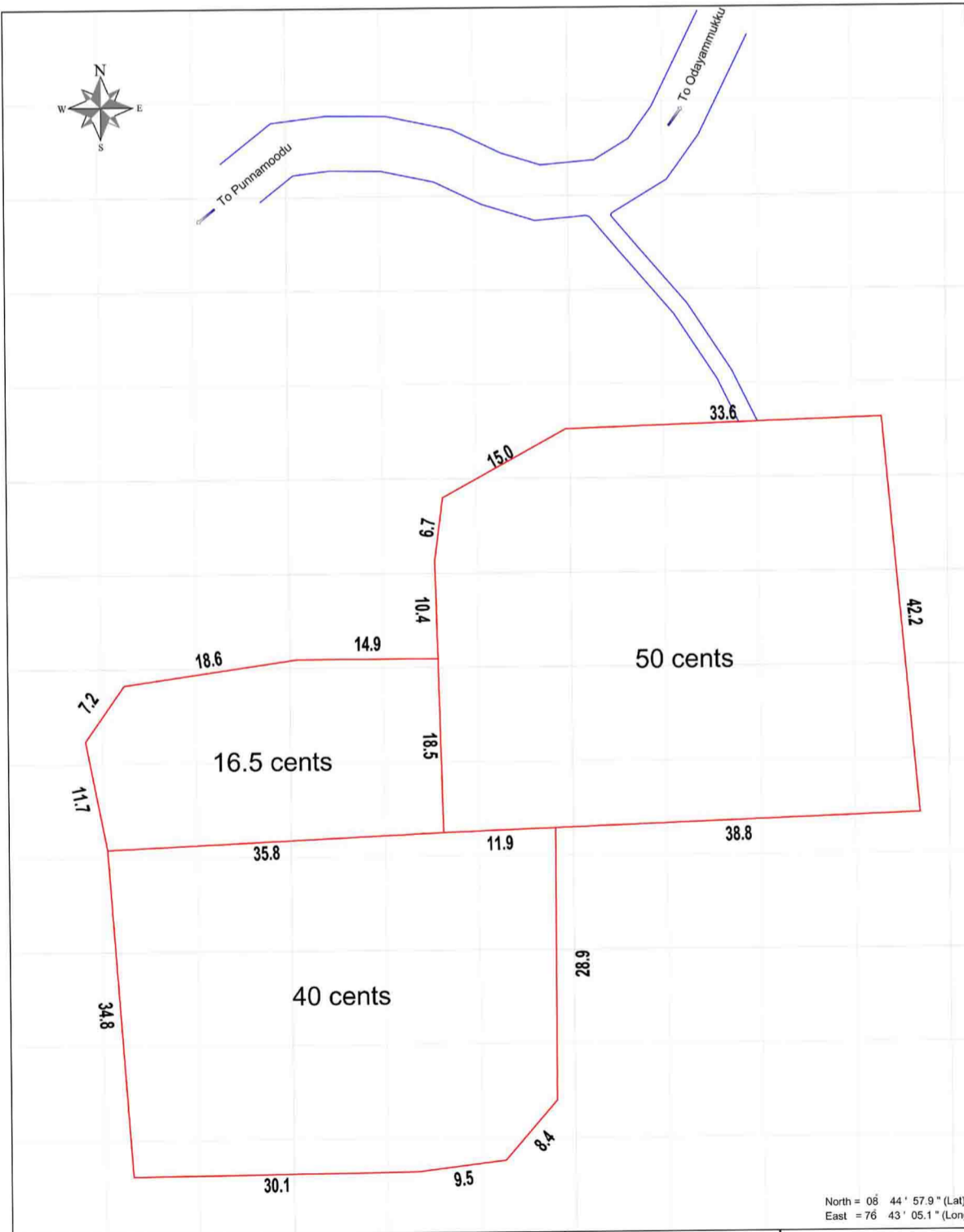
Survey Nos -

DATE - 24-10-2011

DWG REF - 2011102421 R

All Dimensions are in Metres

10 M x 10 M Grid Spacing



North = 08° 44' 57.9" (Lat)
 East = 76° 43' 05.1" (Long)

**SITE FOR
 BHARATH PUBLIC SCHOOL - KANNAMBA - VARKALA**

TOTAL AREA :- 43.10 ares (1 acre 6.500 cents)

District - Thiruvananthapuram

Taluk - Chirayinkeezhu

Village - Varkala

Survey Nos - 1455/1,2

DATE - 24-10-2011

DWG REF - 2011102421

SCALE FOR A3 SIZE PRINT

- 1:400

All Dimensions are in Metres

10 M x 10 M Grid Spacing